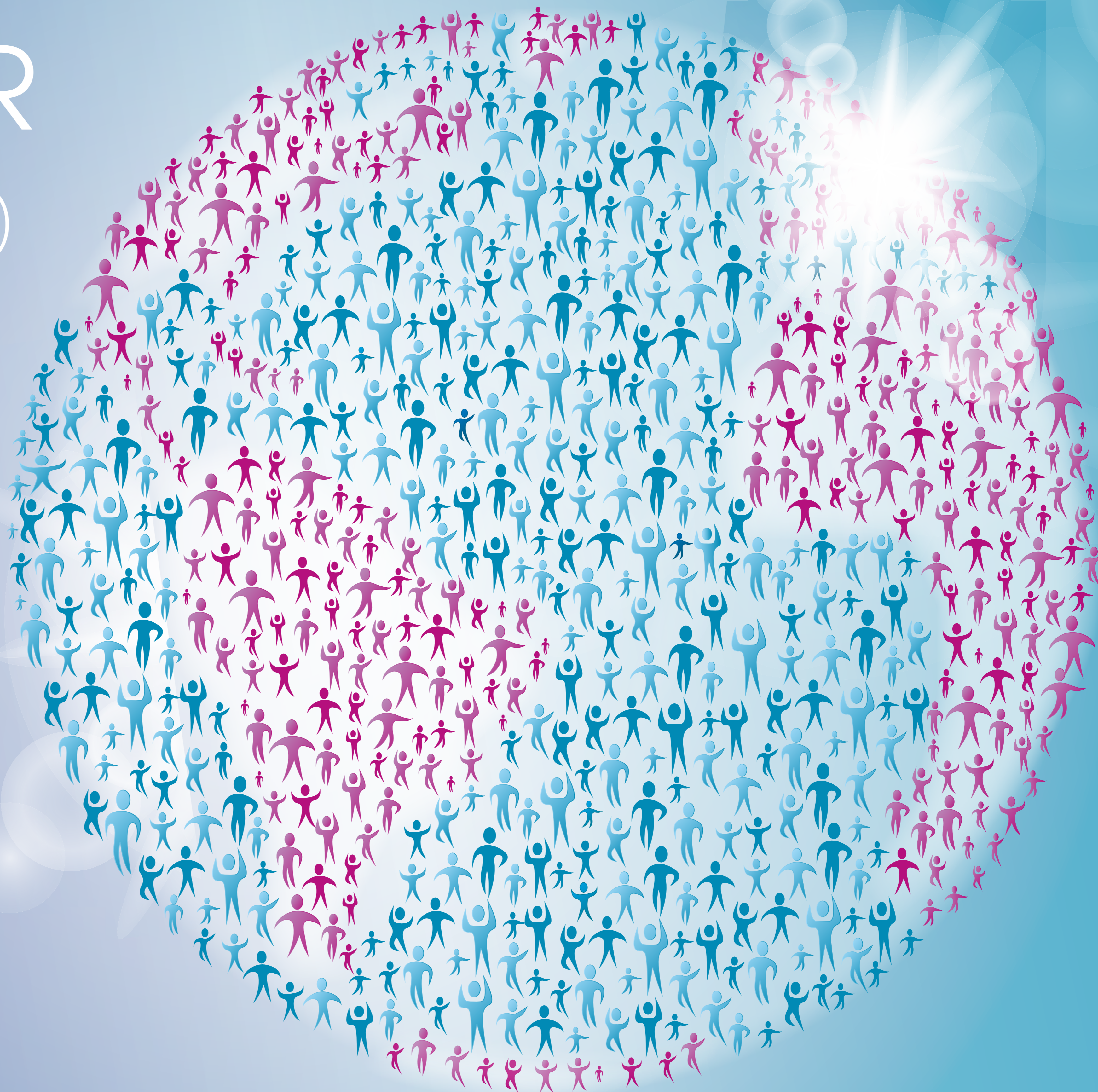


TOGETHER  
WE STAND  
AGAINST  
EPILEPSY



# A GLOBAL COMMITMENT TO HELPING PATIENTS WITH EPILEPSY

At Eisai, we prioritise patients and their families through our focus on continually improving the benefits that healthcare can provide. We call this *human health care*, or *hhc*. We strive to understand life from the patient's perspective and work together to fulfil the unmet medical needs faced by patients, their families and the healthcare professionals who treat them.



1. Eisai Global. Eisai at a glance [www.eisai.com/company/glance/index.html](http://www.eisai.com/company/glance/index.html) (accessed August 2021).

2. . ClinicalTrials.gov (accessed August 2021).

\*Interventional, industry-funded studies, including those in unlicensed indications and that have not completed. Includes partial-onset seizures, secondarily generalised seizures, primary generalised tonic-clonic seizures, refractory seizures and Lennox-Gastaut syndrome.